



30 Vine Street
York, YO23 1BB
£440,000



NO ONWARD CHAIN! Churchills Estate Agents are delighted to offer for sale this two double bedroom mid terrace house, moments away from Bishopthorpe Road shopping parade and its popular thriving community, close to York city centre and Rowntree park.

Updated to a very good standard throughout with bespoke Parquet flooring and feature log burner, the well cared for living accommodation comprises; entrance hallway, front reception with bay window, separate sitting room, full width kitchen with fitted appliances, utility room/WC, first floor galleried landing, two double bedrooms, three piece house bathroom suite and a boarded loft space accessed via a fixed wooden stair.

To the outside is a traditional front forecourt and rear walled courtyard garden with gate to service alleyway.

An accompanied viewing is strongly recommended.

Sitting/Dining Room

12'7" x 9'10" (3.84m x 3.01m)



Lounge

13'2" x 11'10" (4.03m x 3.61m)

Kitchen

12'10" x 9'10" (3.92m x 3.00m)

Utility Room

11'8" x 6'5" (3.58m x 1.98m)

Bedroom 1

13'2" x 10'9" (4.03m x 3.29m)

Bedroom 2

11'10" x 8'7" (3.61m x 2.63m)

Bathroom

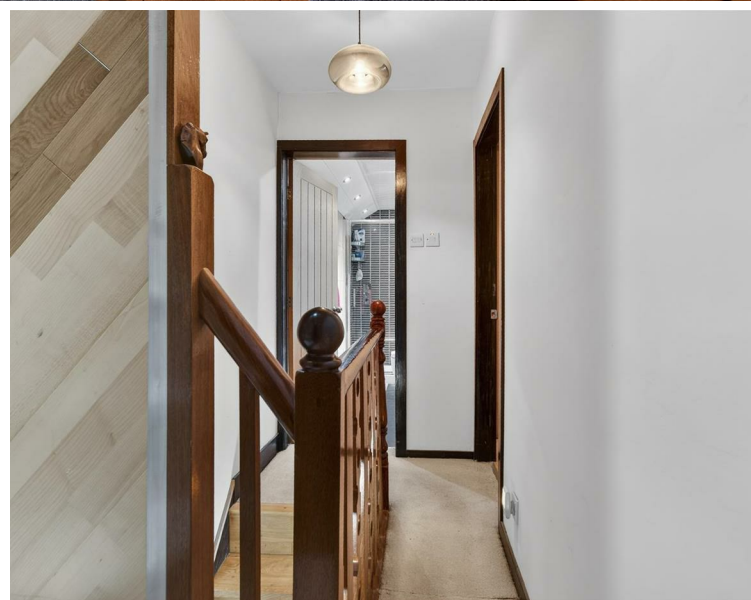
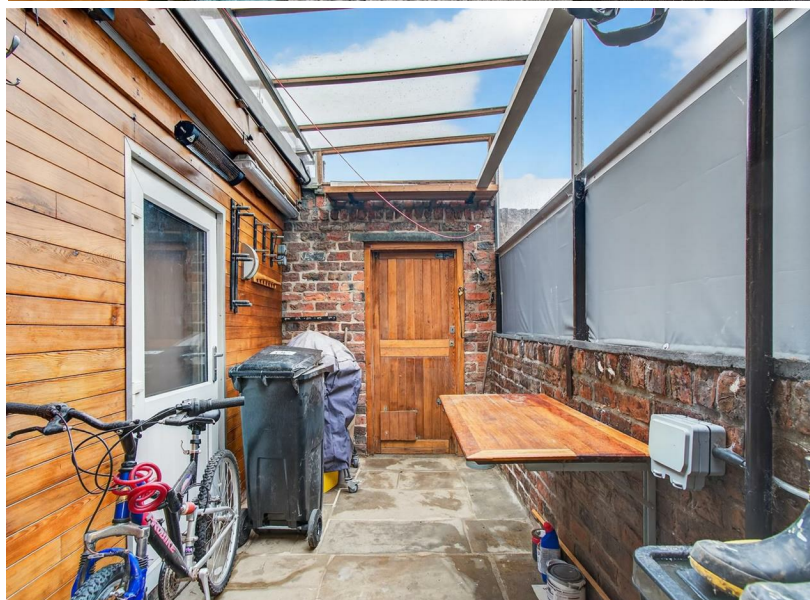
Agents Notes:

To be able to purchase a property in the United Kingdom all agents have a legal requirement to conduct Identity checks on all customers involved in the sales transaction to fulfil their obligations under Anti Money Laundering regulations. A

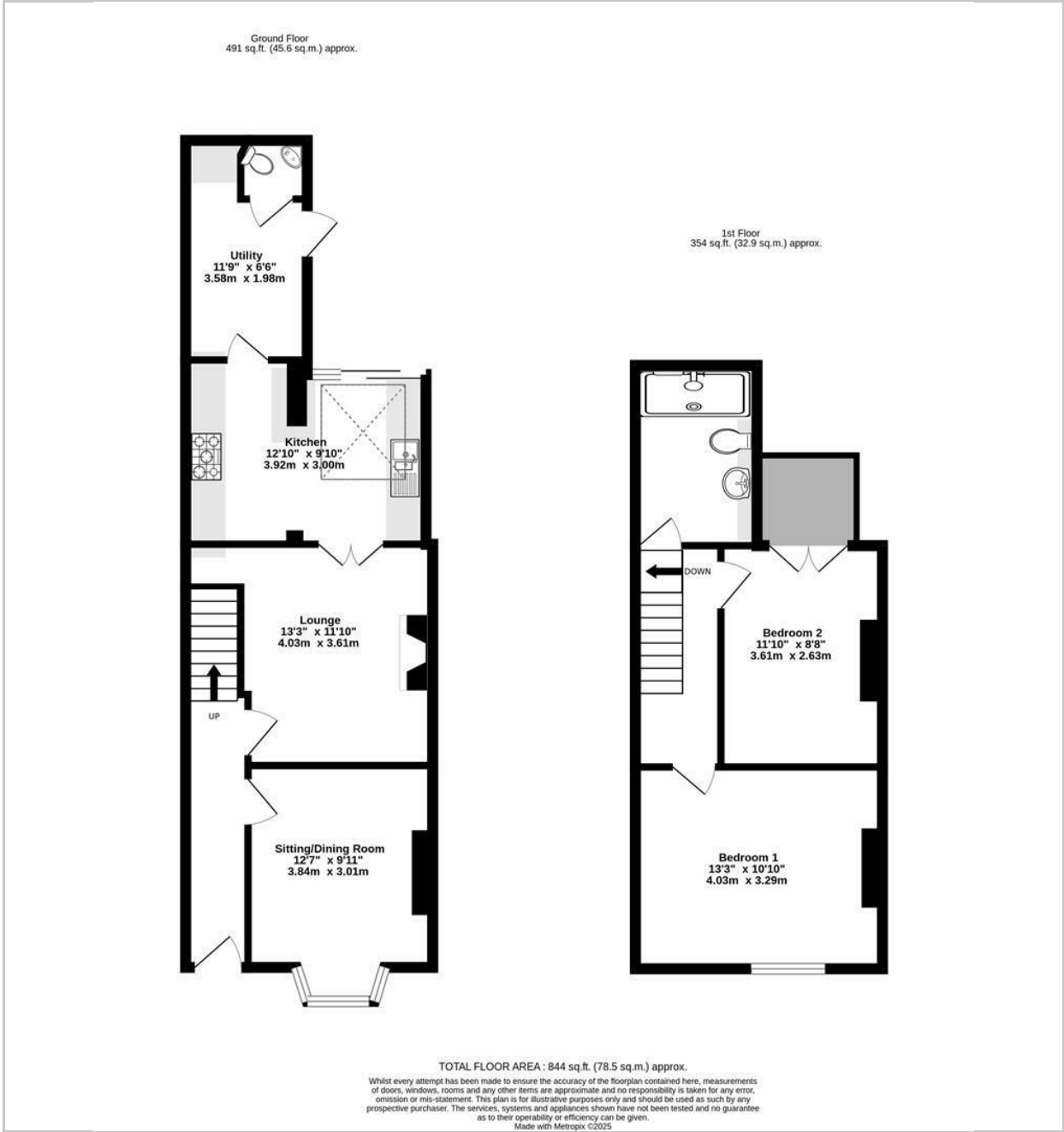




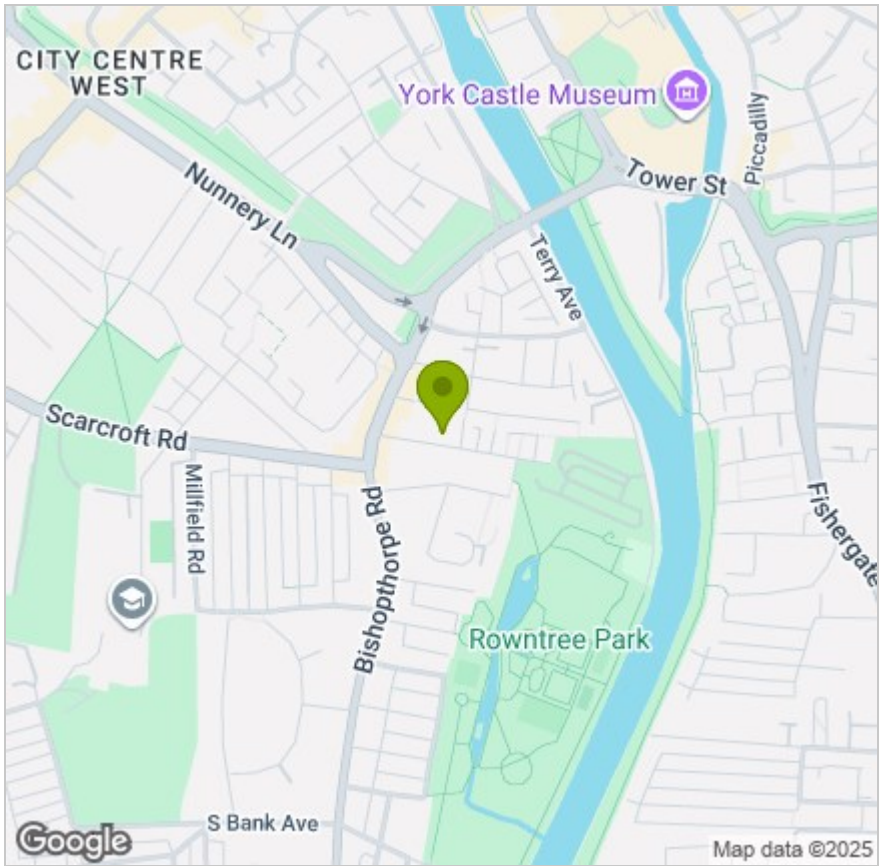
charge to carry out these checks will apply.
Please ask our office for further details



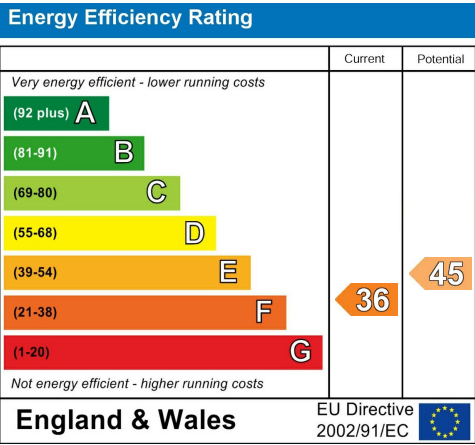
FLOOR PLAN



LOCATION



EPC



These particulars, whilst believed to be accurate are set out as a general outline only for guidance and do not constitute any part of an offer or contract. Intending purchasers should not rely on them as statements of representation of fact, but must satisfy themselves by inspection or otherwise as to their accuracy. No person in this firms employment has the authority to make or give any representation or warranty in respect of the property.